



THALASSA

# SATELLITE MONITORING SYSTEM

Thuraya Satellite, Inmarsat Satellite, and AIS Satellite



**XCILON**  
FZCO

## **Contact Us :**

**Email** : [info@xcldx.com](mailto:info@xcldx.com)  
**Website** : [www.xcldx.com](http://www.xcldx.com)  
**Address** : Dubai Silicon Oasis, DDP, Building A2,  
Dubai, United Arab Emirates

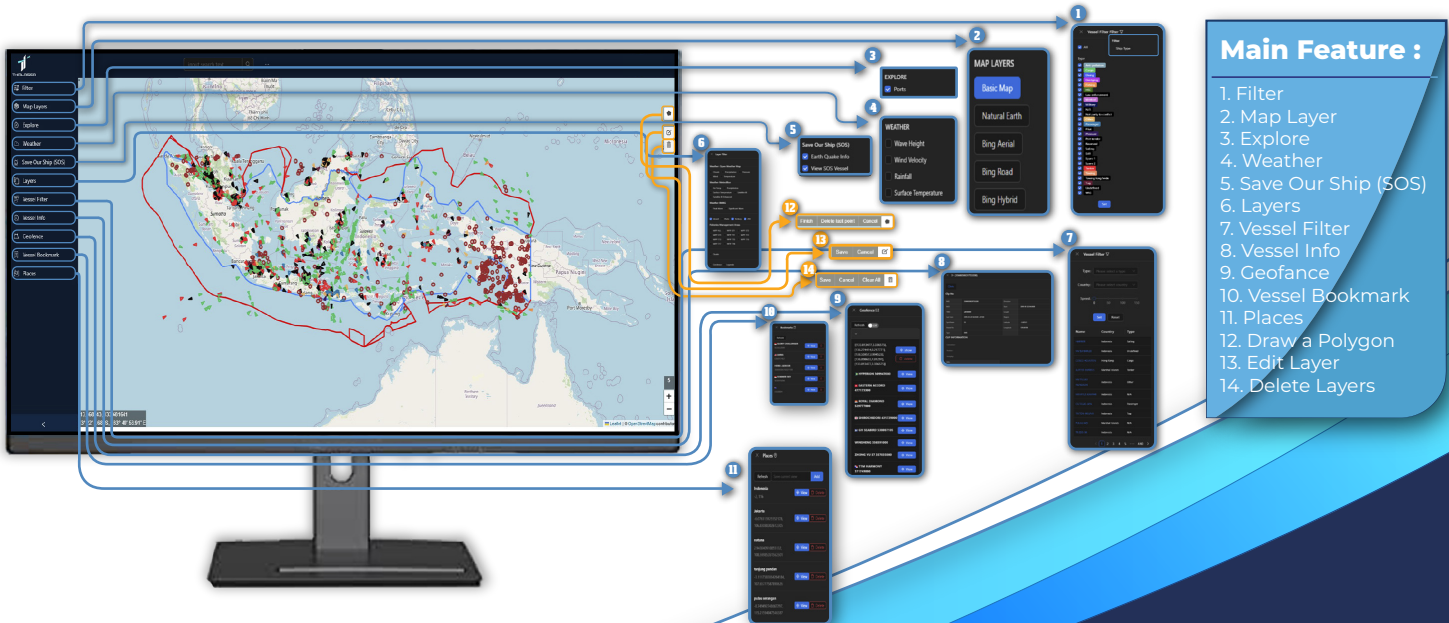
# SATELLITE MONITORING SYSTEM

Satellite Monitoring System is an advanced technology that utilises satellites to monitor, track and manage various assets and activities on earth in real-time, offering a highly accurate and efficient solution for global monitoring needs across various industry sectors.

Thalassa is able to collect, process and integrate multiple data sources such as data from Thuraya and Inmarsat, combined with Automatic Identification Systems (AIS) to perform comprehensive maritime monitoring and analysis. By utilising advanced satellite technology from Thuraya and Inmarsat, Thalassa can provide real-time data on vessel position, weather conditions and other critical information. AIS enables vessel tracking, providing unique identification, position, course and speed of vessels on a continuous basis.



## Thalassa App Main View



- Main Feature :**
1. Filter
  2. Map Layer
  3. Explore
  4. Weather
  5. Save Our Ship (SOS)
  6. Layers
  7. Vessel Filter
  8. Vessel Info
  9. Geofence
  10. Vessel Bookmark
  11. Places
  12. Draw a Polygon
  13. Edit Layer
  14. Delete Layers



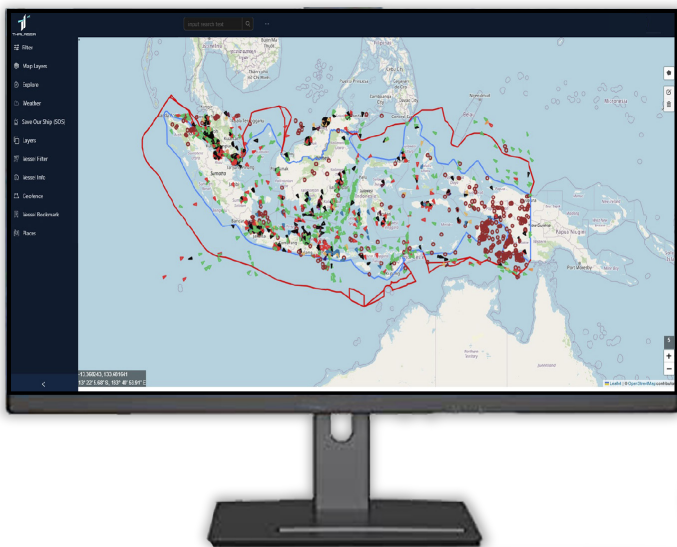
THALASSA

## About Thalassa app

Thalassa application for vessel monitoring offers a range of key features designed to ensure efficient and safe management of vessel fleets. One of its flagship features is real-time tracking of vessel positions using advanced GPS technology, enabling users to monitor vessel locations at all times.

This feature is complemented by interactive maps that provide a clear visualisation of vessel movements at sea. In addition, the Thalassa app provides automatic notifications for important events, such as unexpected route changes, severe weather, or technical issues that require immediate attention.

## Thalassa Main Feature



1

### **Historical position vessel movement**

- Display specific vessel positions, routes and associated historical AIS data
- Get integrated timestamps on historical track layers for easy analysis

2

### **Position Identification of satellite telecommunication data**

- Display the position of Thuraya data and Inmarsat data satellite telecommunication on the platform to see and analyze the movements obtained

3

### **Behavioral Anomaly detection**

- Identify the possibility of anomalous activities such as the meeting of ship data positions with Thuraya or Inmarsat satellite telecommunications position data
- Detect irregularities in the displayed vessel identity information such as IMO, MMSI, and Callsign
- Suspicious vessel movement position change

4

### **Weather Information**

- This feature shows weather information from several sources to be used as a supporting tool for analysis of the surrounding environment.

5

### **Integration data**

- Data integration from big data sources such as earthquake information, fishing areas to enrich monitoring activities for operational monitoring of vessel positions and satellite telecommunications data positions.



**Contact Us :**

info@xcldx.com  
www.xcldx.com

Dubai Silicon Oasis, DDP, Building A2,  
Dubai, United Arab Emirates